

**A | C | W**

**ARTISAN'S CABINETRY AND WOODWORKS**

GEORGETOWN, TEXAS

# PRODUCT CATALOG

# 2025



**DOORS / STYLES**

---



**RAISED PANEL**



**CLASSIC FLAT PANEL**



**SHAKER**



**MODERN SHAKER**



**ARTISAN'S CABINETRY AND WOODWORKS**

GEORGETOWN, TEXAS

# DOORS / STANDARD COLORS



**EBONY**  
POPLAR



**DARK SADDLE**  
POPLAR



**ANTIQUE ARMOIRE**  
POPLAR



**FIELDSTONE**  
POPLAR



**ESPRESSO**  
POPLAR



**TOFFEE**  
POPLAR



**BURNT AMBER**  
OAK



**AUTUMN**  
OAK



**MILO**  
MAPLE



# DOORS / STANDARD AND MAPLE COLORS



**STORM**  
POPLAR



**CHESTNUT**  
POPLAR



**BRONZE**  
POPLAR



**WEATHERED GATE**  
POPLAR



**ACORN**  
POPLAR



**PEPPERCORN**  
POPLAR



**SLATE GRAY**  
POPLAR



**BUCKSKIN**  
MAPLE



**TEAK**  
POPLAR



DOORS / MAPLE COLORS



**EBONY**  
MAPLE



**DARK SADDLE**  
MAPLE



**ANTIQUE ARMOIRE**  
MAPLE



**FIELDSTONE**  
MAPLE



**ESPRESSO**  
MAPLE



**TOFFEE**  
MAPLE



**BURNT AMBER**  
MAPLE



**AUTUMN**  
MAPLE



**HAZELNUT**  
MAPLE



**DOORS / KNOTTY ALDER COLORS**



**EBONY**  
KNOTTY ALDER



**DARK SADDLE**  
KNOTTY ALDER



**ANTIQUE ARMOIRE**  
KNOTTY ALDER



**FIELDSTONE**  
KNOTTY ALDER



**ESPRESSO**  
KNOTTY ALDER



**TOFFEE**  
KNOTTY ALDER



**BURNT AMBER**  
KNOTTY ALDER



**AUTUMN**  
KNOTTY ALDER



**HAZELNUT**  
KNOTTY ALDER



**DOORS / COLORS WITH GLAZE**



**AUTUMN**  
MAPLE w/Glaze



**BURNT AMBER**  
MAPLE w/Glaze



**HAZELNUT**  
MAPLE w/Glaze



**TOFFEE**  
MAPLE w/Glaze



**BUCKSKIN**  
MAPLE w/Glaze



**BURNT AMBER**  
KNOTTY ALDER w/Glaze



**HAZELNUT**  
KNOTTY ALDER w/Glaze



**AUTUMN**  
KNOTTY ALDER w/Glaze



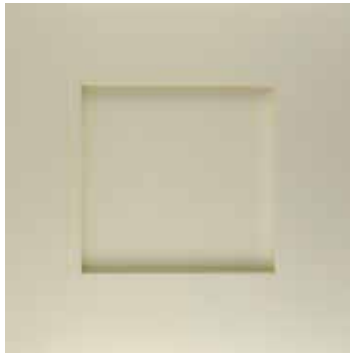
**TOFFEE**  
KNOTTY ALDER w/Glaze



**DOORS / PAINT COLORS**



**ALABASTER**



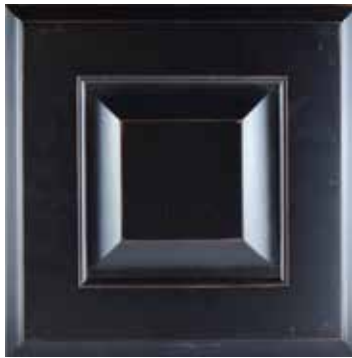
**AGED WHITE**



**WHITE PLAINS**



**PURE WHITE**



**WEATHERED  
BLACK**



**METROPOLITAN  
GRAY**



**IRON GRAY**



**CHEYENNE  
GRAY**



**BLACKLAND  
PRAIRIE**



**ARTISAN'S CABINETRY AND WOODWORKS**  
GEORGETOWN, TEXAS



**DOORS / PAINT COLORS**



**DENIM BLUE**



**THUNDEROUS GRAY**



**CRAFTED TAUPE**



**MALLARD**



**BLUE SUEDE**



**AGED WHITE**  
w/Mocha Inking



**ALABASTER**  
w/Mocha Inking



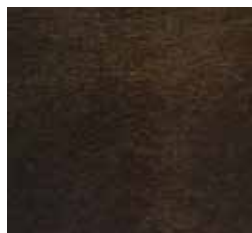
**DOORS / ACW LITE SERIES - PARTICLE BOARD COLORS**



**EBONY**  
Poplar



**DARK SADDLE**  
Poplar



**ANTIQUÉ ARMOIRE**  
Poplar



**FIELDSTONE**  
Poplar



**ESPRESSO**  
Poplar



**TOFFEE**  
Poplar



**EBONY**  
Maple



**DARK SADDLE**  
Maple



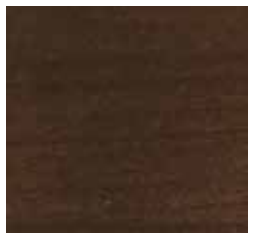
**ANTIQUÉ ARMOIRE**  
Maple



**FIELDSTONE**  
Maple



**ESPRESSO**  
Maple



**HAZELNUT**  
Maple



**BURNT AMBER**  
Maple



**AUTUMN**  
Maple



**TOFFEE**  
Maple



**MILO**  
Maple



# DOORS / ACW LITE SERIES - PARTICLE BOARD COLORS



**EBONY**  
Knotty Alder



**DARK SADDLE**  
Knotty Alder



**ANTIQUÉ ARMOIRE**  
Knotty Alder



**FIELDSTONE**  
Knotty Alder



**ESPRESSO**  
Knotty Alder



**HAZELNUT**  
Knotty Alder



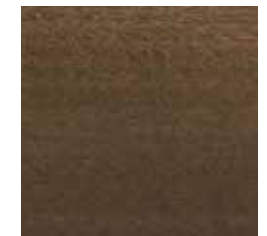
**BURNT AMBER**  
Knotty Alder



**AUTUMN**  
Knotty Alder



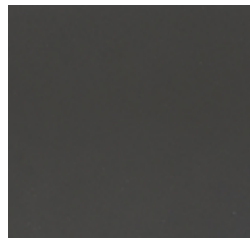
**TOFFEE**  
Knotty Alder



**MILO**  
Knotty Alder



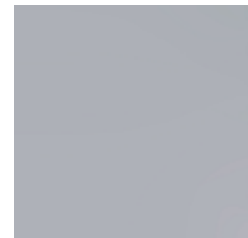
**WHITE PLAINS**



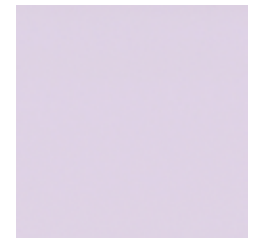
**IRON GRAY**



**CRAFTED TAUPE**



**METROPOLITAN GRAY**



**PURE WHITE**



**CHEYENNE GRAY**



**BLACKLAND PRAIRIE**  
(ACCENT ONLY)



ARTISAN'S CABINETRY AND WOODWORKS

GEORGETOWN, TEXAS

## **OPTIONS / CROWN STYLES**

---



**ELEGANCE**



**MODERN**



**ROPE**



**DENTIL**

## **CROWN / UPGRADED CORNER MOULDINGS**

---



**FLUTED**



**CLASSIC**



**REEDED**



**SMOOTH**

**PLEASE NOTE**

The following photos are for representation purposes only.  
Actual items and/or sizes may vary from what is shown.

**OPTIONS / BRACKETS and CORBELS**



**STANDARD BAR  
BRACKET**



**STANDARD  
CORBEL**



**DECORATIVE  
CORBEL**



**SMALL ACANTHUS  
CORBEL**



**LARGE ACANTHUS  
CORBEL**

Photos are for representation only and are not to scale. Actual carvings or details may vary.

**OPTIONS / DECORATIVE POSTS**

---



**TURNED  
(5")**



**MODERN  
(5")**



**TURNED  
(3")**



**ROPE  
(3")**



**FLUTED  
(3")**

**PLEASE NOTE**  
The following photos are for representation purposes only.  
Actual items and/or sizes may vary from what is shown.

**CABINET / OPTIONS**



**3 DRAWER STACK**



**4 DRAWER STACK**



**POT and PAN  
DRAWERS**



**ROLL-OUT TRAYS  
2" and 5"**



**SINGLE TRASH  
PULLOUT**



**DOUBLE RECYCLE  
PULLOUT**



**CABINET / OPTIONS**



**REVISED SINK DOORS**  
w/Apron Front Sink Option



**LAZY SUSAN**



**SPICE PULL-OUT**



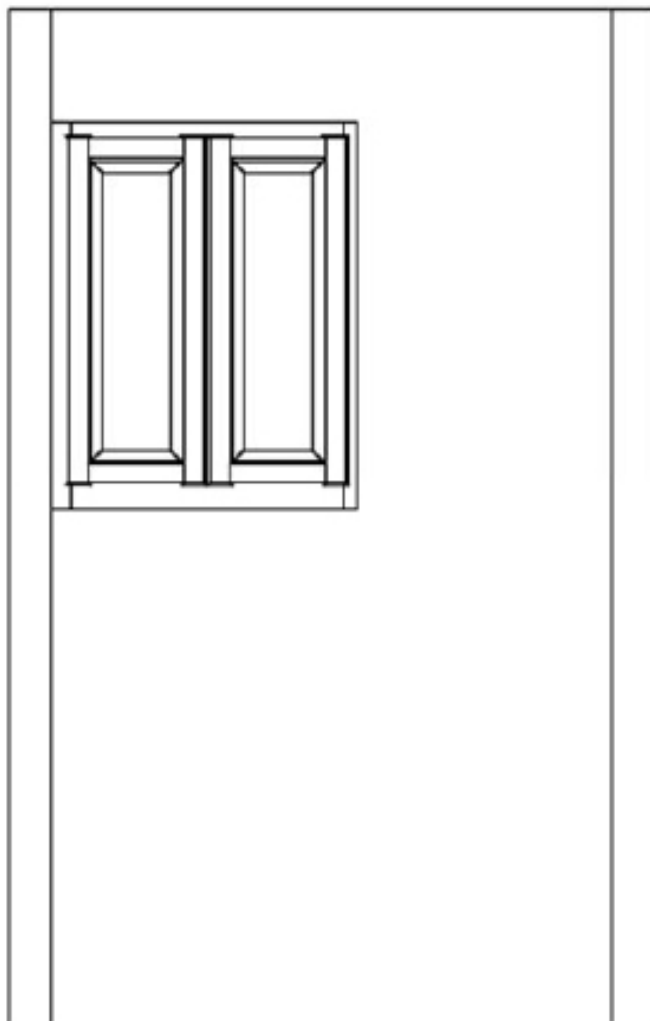
**ACW TRASH PULL-OUT**





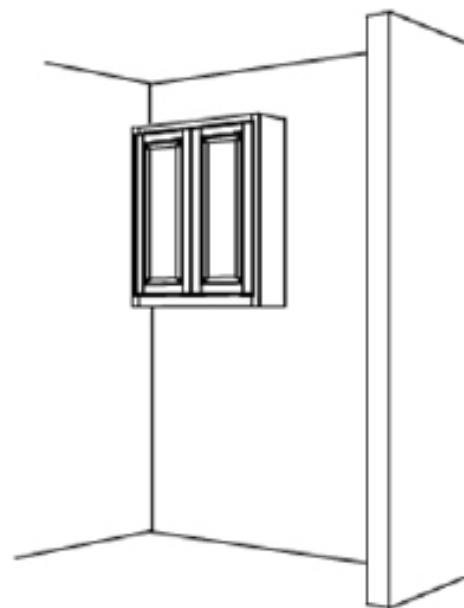
# CABINET / OPTIONS

## SAMPLE STANDARD LINEN UPPER (HEADKNOCKER)



**NOTE:**

- Up to 36" wide and 36" high
- Flat finished ends when applicable

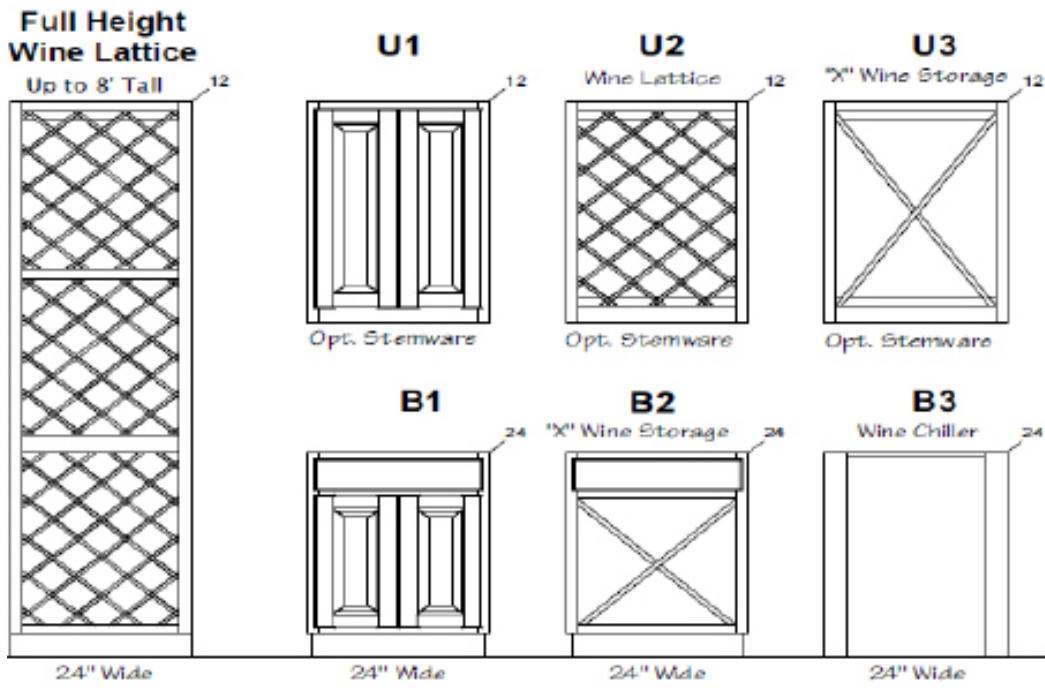
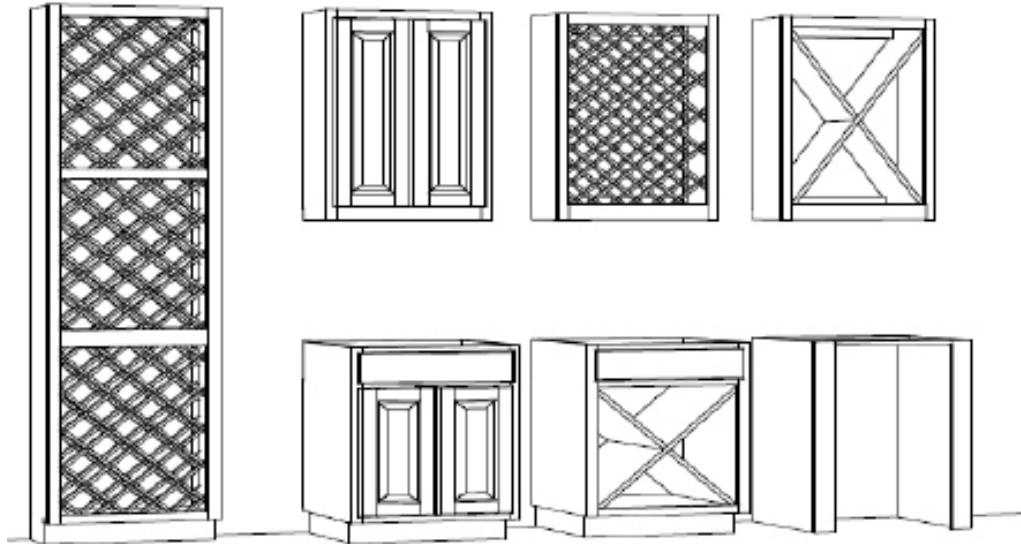


Dimensions and design may vary based on final floorplan, appliances and field measures



# CABINET / OPTIONS

## WINE ROOM OPTIONS

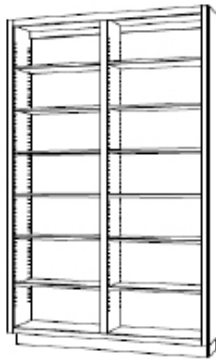


Dimensions and design may vary based on final floorplan, appliances and field measures

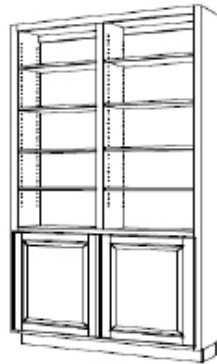


# CABINET / OPTIONS

## BOOK SHELF OPTIONS



Style A



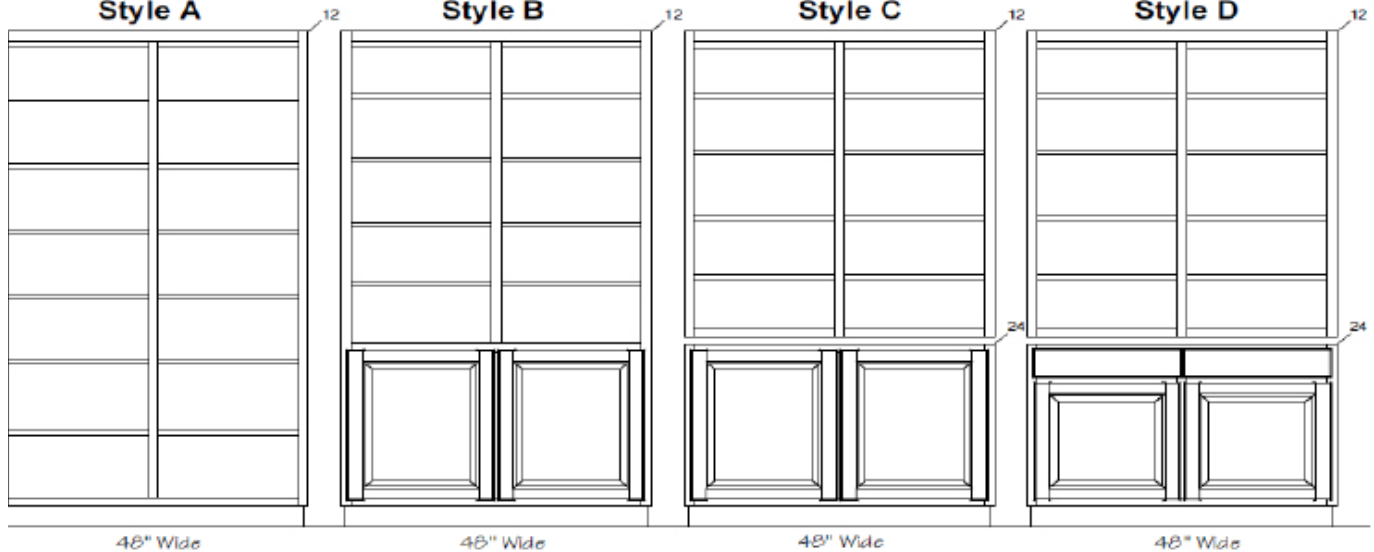
Style B



Style C



Style D

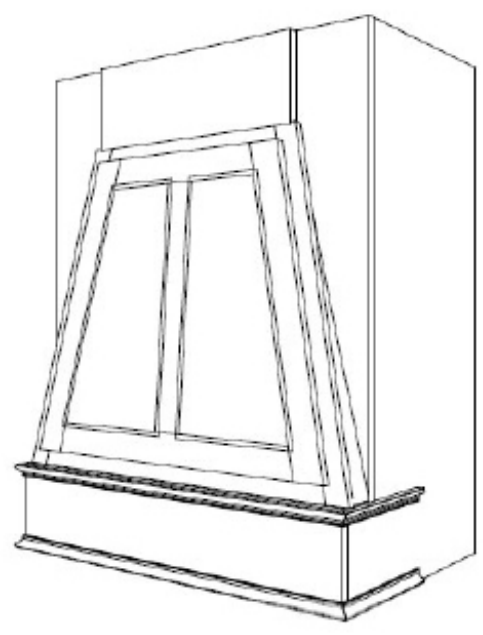
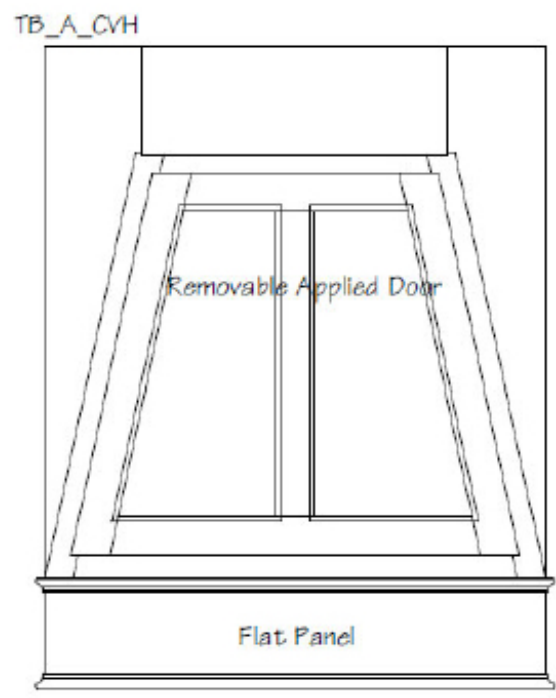


Dimensions and design may vary based on final floorplan, appliances and field measures



# CABINET / OPTIONS

## VENT HOOD STYLE "N"

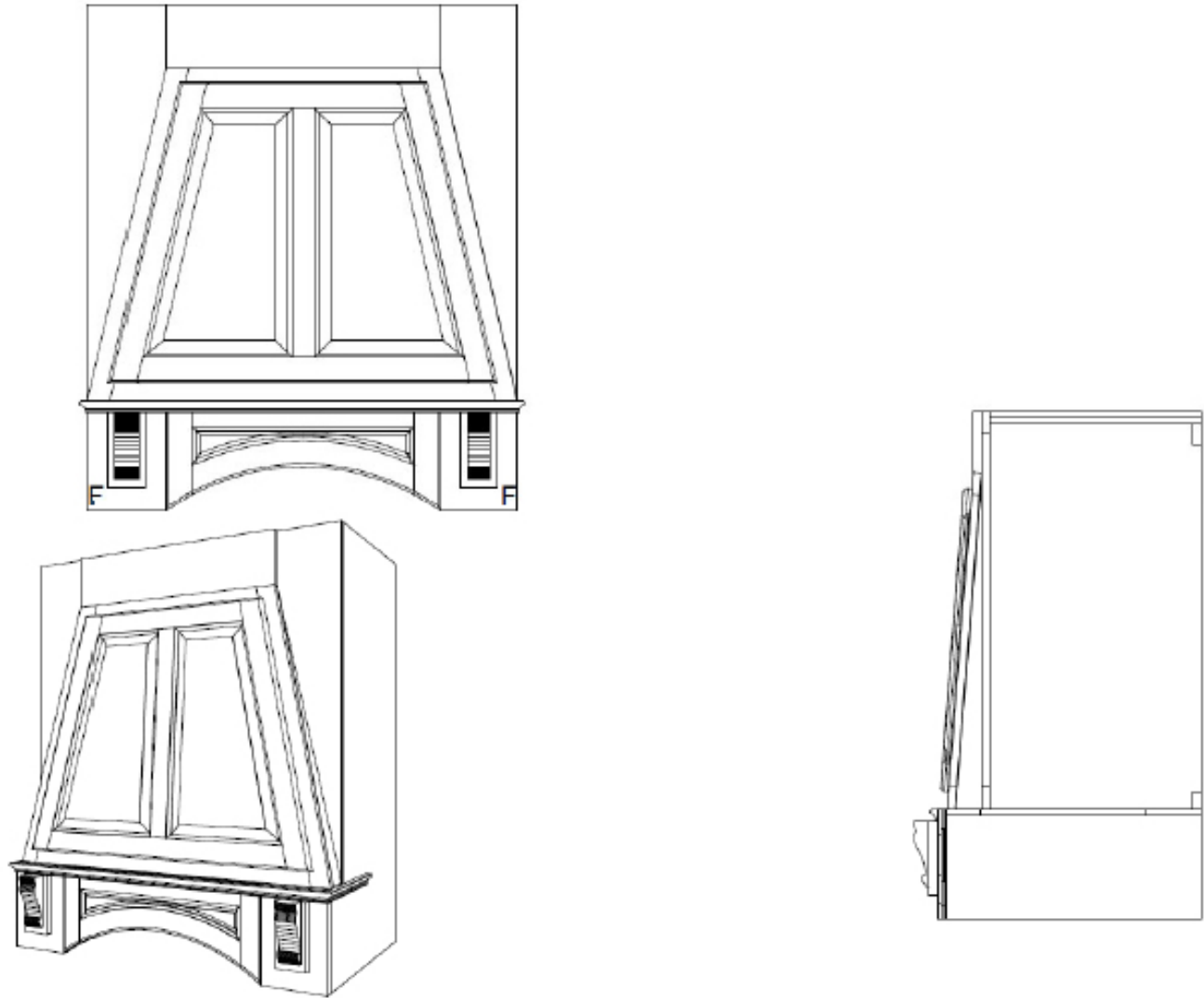


Dimensions and design may vary based on final floorplan, appliances and field measures



# CABINET / OPTIONS

## VENT HOOD STYLE "A"

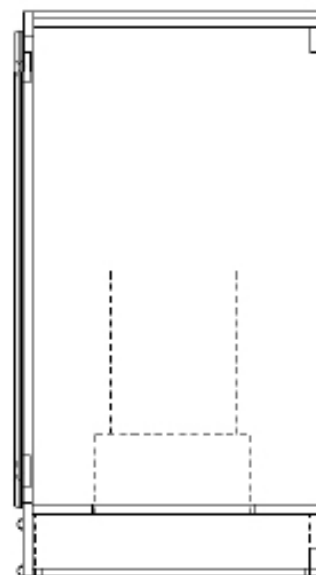
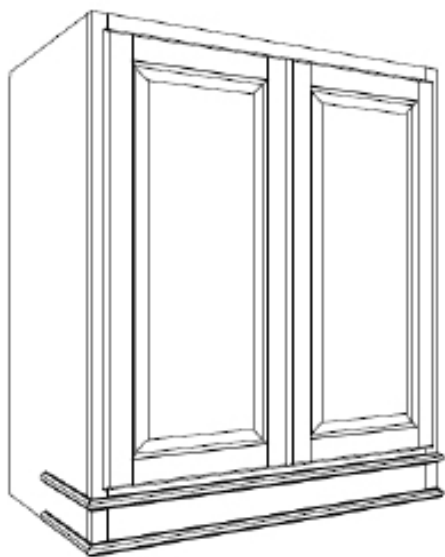
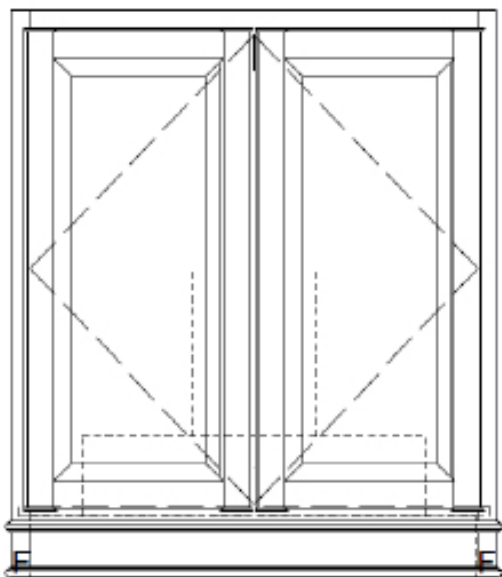


Dimensions and design may vary based on final floorplan, appliances and field measures



# CABINET / OPTIONS

## VENT HOOD STYLE "D"

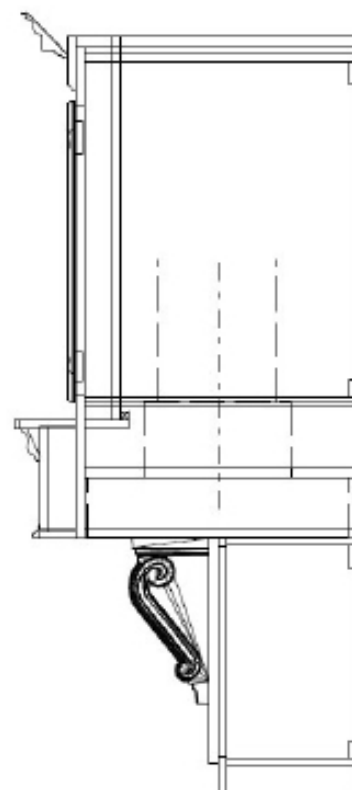
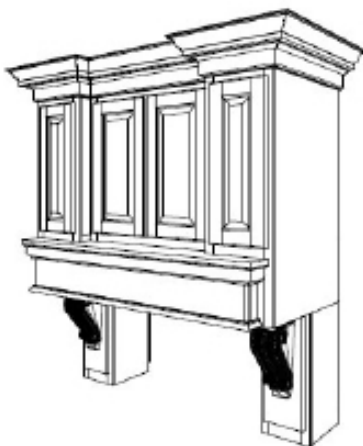
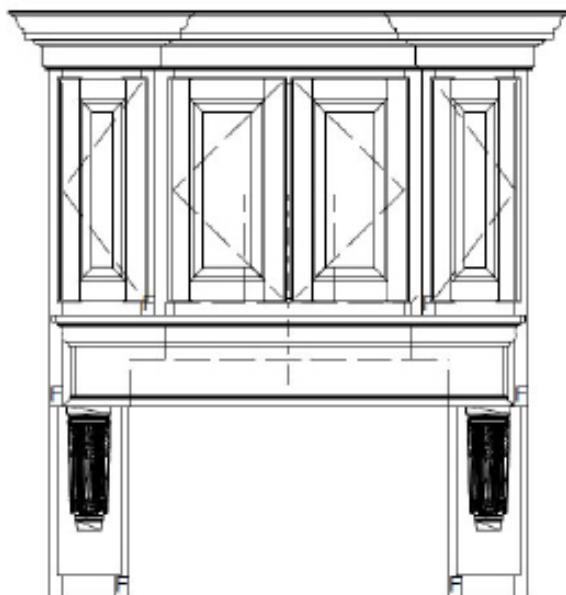


Dimensions and design may vary based on final floorplan, appliances and field measures



CABINET / OPTIONS

VENT HOOD STYLE "H"

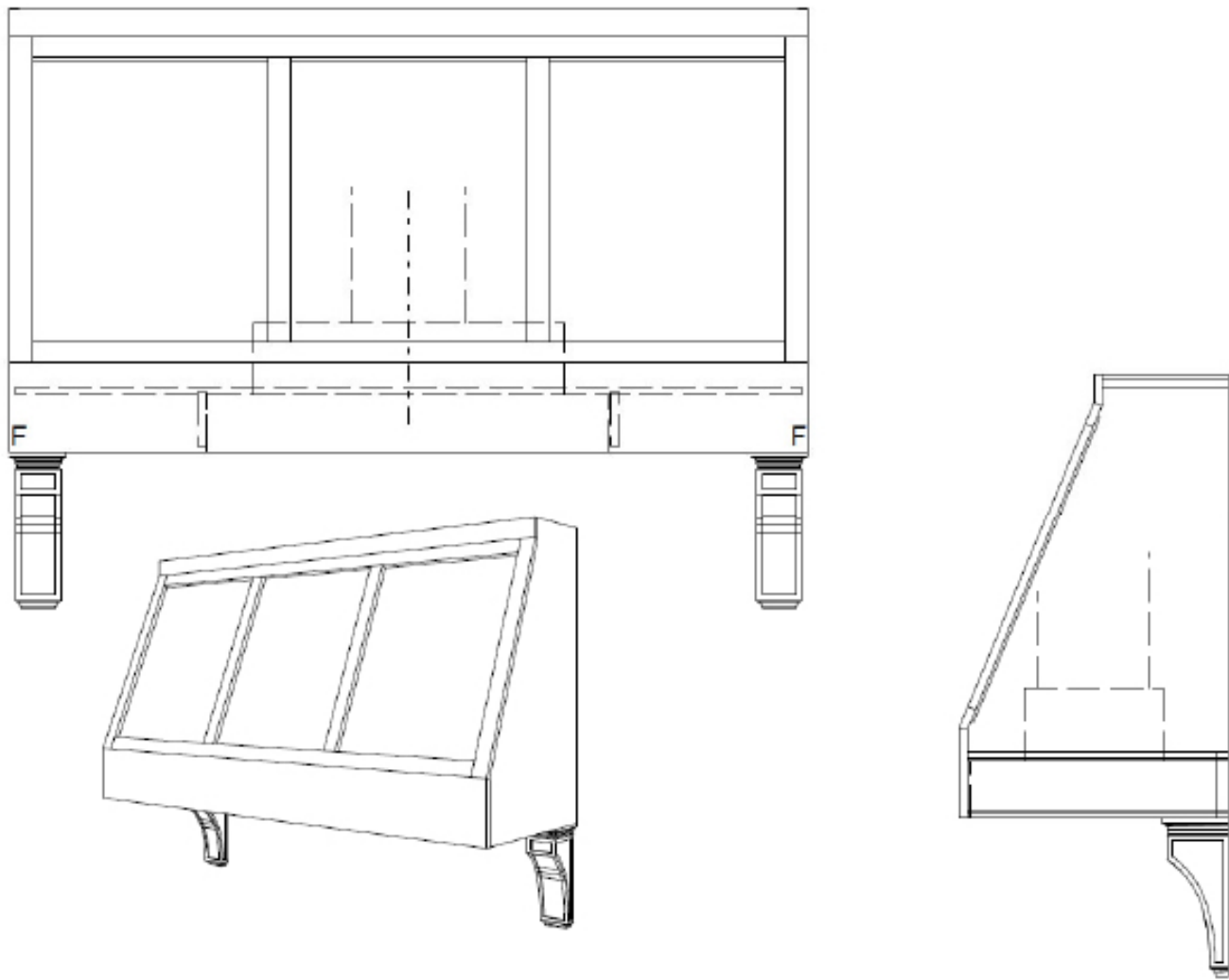


Dimensions and design may vary based on final floorplan, appliances and field measures



# CABINET / OPTIONS

## VENT HOOD STYLE "V"



Dimensions and design may vary based on final floorplan, appliances and field measures





# TIPS / KITCHEN CABINET CARE AND CLEANING

## PROPER CARE

Kitchen Cabinets, just like fine furniture, should be dusted or vacuumed periodically depending on the amount of particulate matter that may have accumulated. Always dust with a lightly moistened damp cloth, as dry dusting may scratch the surface. It is also a good practice to follow the grain of wood when dusting - wiping across the grain could cause scratches to appear if the dust contains grit. Residues such as smoke, cooking vapors or body oils can be cleaned with a damp cloth as well. Remember to use a clean soft cloth such as an old T-shirt, cheesecloth, dishtowel, flannel or chamois with no snaps or buttons that may scratch the surface.

All finishes require a period of curing to take place, approximately 30 days, so the film can achieve its full performance properties.

## CLEANING OF UV FINISHES

There are three basic types of furniture careproducts: silicones, waxes and polishes.

While silicone cleaners offer a high degree of shine, the silicone seeps into even the highest quality finishes creating a barrier that will not accept stain or finish. This makes it virtually impossible to re-finish or touch up when it may be required.

All catalyzed finishes are durable and hard enough that in most cases they do not require any wax. Waxes should actually be avoided because their regular use may result in build-up wax film on the surface. This build-up could actually attract dirt, smoke and other pollutants in the air, resulting in smudges and streaks. Also, many waxes contain grit that may permanently damage the surface if used improperly.

## BASIC CARE TIPS

- Wipe up spills, splatters and water spots as they occur - keep the cabinets dry.
- Clean as needed with a soft, lint free cloth, which can be lightly damp with warm water.
- Dry surfaces immediately with a soft cloth.
- Avoid using a dishcloth or sponge - it could contain remnants of grease or detergents.
- Do not use products with bleach, ammonia or abrasive additives.
- Never use scouring pads, steel wool or powdered cleaners.
- Do not allow oven cleaners to come in contact with wood finishes.
- Avoid placing small kitchen appliances where heat is directed onto cabinet surfaces.
- Avoid draping damp clothes or dishtowels over cabinet doors -excessive moisture



According to the American Hardwood Council, confusion is fueled by the myth that wood is “alive” and needs to breathe. On the contrary, according to the council’s information center, wood doesn’t need be “moisturized” with oily cleaners and polishes. If wood dries and cracks, it’s due to changes in humidity, not for lack of oil.





**ARTISAN'S CABINETRY AND WOODWORKS**

GEORGETOWN, TEXAS